



Biological control

Amblyseius cucumeris

AMBLYcontrol | Technical sheet

PRODUCT

- Bottle 100.000 mites
- Bottle 250.000 mites
- Bottle 500.000 mites
- Box 250 sachets (1000 individuals/sachet)

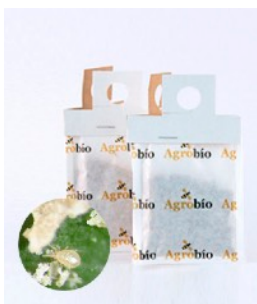
DESCRIPTION OF THE PRODUCT

Amblyseius cucumeris is a predatory mite belonging to the phytoseidae family, which mainly feeds on eggs and larvae of **thrips**. It stands out for its excellent mobility on the underside of the leaves and on the flower and because it can survive in the absence of prey if it is found in plants with pollen, such as peppers.

BIOLOGY. The life cycle of *Amblyseius cucumeris* is completed in 6 days at 25°C, although it can take three times more to complete if the ambient temperature is below 20°C. It does not withstand extreme temperature conditions and is sensitive in situations of relative humidity below 50%, drastically decreasing its predatory capacity. With low humidity (less than 65%) the development of *A. cucumeris* is slowed down because there is no more hatching of the eggs. In cucumber it has been shown that it does not suffer in low humidity situations, thanks to the favorable microclimate in the cucumber leaf.

ACTION MODE:

- The mites insert their mouthparts and completely empty their prey.
- *Amblyseius cucumeris* should be applied, especially, to control nymphs of thrips in the first larval stage. This predatory mite is also capable of feeding on other mites such as red and white spider mite, etc., in addition to molasses and pollen.



Product



Adult



ADVANTAGES

- Good performance for the control of thrips eggs and larvae.
- Ideal for preventive control.
- Compatible and complementary with other predators and parasitoids.

RECOMMENDED DOSE

- 1 sachet/m². A replacement will be made depending on the crop and its cycle.

Dosage can vary according to preventive dose, medium curative or high curative, depending on the crop and the level of infestation of the pest. Consult an Agrobío field advisor for the recommended dose.

In preventive control it is recommended to feed *A. cucumeris* with POWERFOOD (prey mites) directly in the plant to favor the installation of predatory mites when there is not enough pest in the crop. Consult the strategy with an Agrobío field advisor.

RECOMMENDED CROPS

It can be used in a wide range of crops, such as strawberry, sweet-pepper and cucumber.

USE

Sachet: the sachets will be separated carefully and hung directly on the plant at half height. Predatory mites will gradually emerge.

Bottle: before opening the bottle inside the crop, set it horizontally and rotate to mix the content homogeneously. Spread it directly on the plants (leaves) in small piles.

PRESERVATION

Keep the box or bottle horizontally and at a temperature of 15-18 °C. Do not break the cold chain in all the transport and storage process. Do not store the product more than 48 hours after receipt, and never expose it to sunlight or pesticides. Do not store with bumblebee hives in areas without ventilation.

Ask about other available formats. Check with local authorities which species are authorized. This document is only for informative purposes, Agrobío is not responsible for the improper use of the product.

